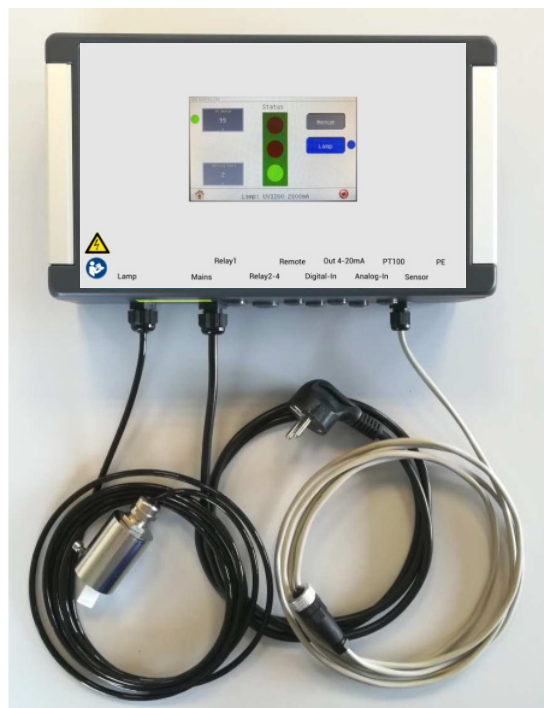


UVS-Control.218

Intelligent control unit with integrated uv lamp driver up to 200W

The UVS-Control.218 unit is specially designed for controlling uv lamps up to 200W with integrated electronic ballast and connection for external sensors.

Equipped with many different interfaces, the controller can also communicate with almost any host or device like PLC, PC, electronic ballast, intelligent sensor etc.



Special advantages

The UVS-Control.218 unit can drive one uv lamp with the integrated lamp driver up to 200W. Additionally up to 250 external uv-drivers be connected via a RS485 bus (Option). There are also interfaces for analog and/or digital sensor like UV sensor, flow meter, pressure sensor, temperature etc. uvs-control maintains lamp and ballast data like preheat current, lamp current etc. Lamps can be switches on/off and dimmed separately. Lamps report their status, power and arc current. Digital inputs and relay outputs are available for process control. uvs-control monitors and controls all data from connected sensors and ballasts.

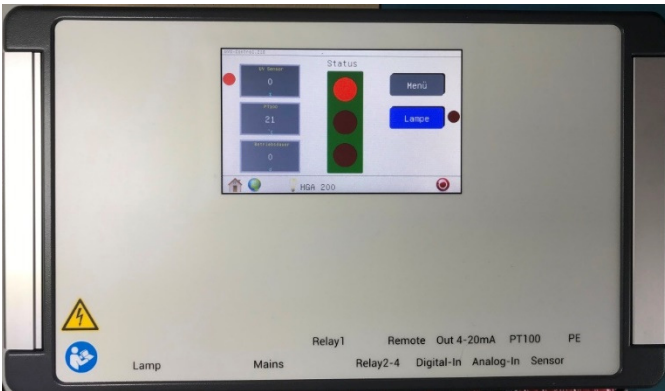
All Information is shown on a 5" color touch display with high resolution.

An integrated (option) Soft-PLC may be used to control the process and the connected devices in stand-alone mode without the need of a superior PLC. All events are logged and stored in the control unit together with date and time from internal RTC (Real Time Clock)

Functions

- Configuring the ballast with predefined or user defined electrical parameters
- Configuring and communicating with sensors
- Logging the system running data
- Communicating with internal or external ballast
- Monitoring and controlling UV output, temperature and lamp lifetime
- Controlling the entire system running
- Act as a gateway between user PLC and ballasts
- Full graphic display with touch function
- Multilingual (German, English, French, Russian)

Easy to install and configure.



Overview - Status



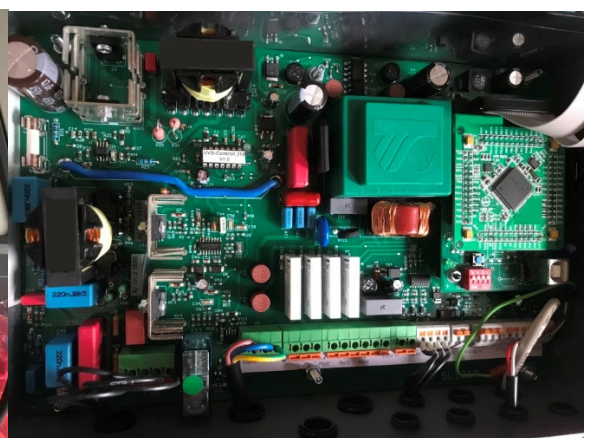
Lamp status monitoring



Settings menu



Connections



Look insight

Available interfaces

Interface	Type	No. of Channels	Protocol/Data
USB 2.0	Serial device	1	Service, Configuration data
RS485 (Option)	2 wire serial	1 (PLC or Sensors or ext. Ballasts)	Modbus RTU
Analog In	0-10V	2 for Sensors	
Analog Out	4-20mA	1 for Signal monitoring	
PT100	PT100 4 wire	1	Temperature
Sensor	SIC UV-Diode	1	
Digital In	24V	3	
Digital In	230VAC	1 for Remote On/Off	
Relay	SPST NO	3	Max. 6A 230VAC
Relay	SPDT	1	Max. 6A 230VAC

Main technical data

Item	Data
Mains voltage	230VAC, 50/60HZ
Lamp data	60W – 200W available, 300W-500W under development
Date and Time	Internal RTC, battery buffered
Digital inputs	3 x 24VDC, 1 x 230VAC
Digital outputs	4 x Relay / max 6A
Analog inputs	2 x 0-10V / 12Bit
Analog outputs	1 x 4-20mA / 12Bit
UV-Sensor	Sensordiode, 0-10V, RS485(Optional)
Display	5" color, Touchscreen
Temperature sensor	Input for PT100
Ambient temperature, storage / humidity	-5 to +70° C / max. 80%, not condensing
Ambient temperature, operating	5 to 45° C, not condensing
Dimensions (WxLxH)	Approx. 300 x 170 x 90 mm
Weight	~ 3 kg
Cooling of the unit	No cooling needed
Interfaces	See table above

Delivery

Samples	1.Q 2019	
Production	2.Q 2019	
RS485 Option	3.Q 2019	
Graphical screen editor (Option)	3.Q 2019	(Windows PC needed)
SoftPLC programming (Option)	3.Q 2019	(Windows PC needed)